

StreamLine

4666B StreamLine Scanner BLE



See indication of scale below

The 4666B StreamLine Scanner BLE boasts an impressive battery life and pinpoint signal detection, this module helps you effortlessly locate signals. Whether after specific StreamLine modules using signal strength and unique identifiers or just need to identify the first signal it catches.

Key features

General

- Size: 150 x 75 x 18 mm
- Weight: 400 grams
- Wide operating range: -20°C ... +60°C
- LCD screen for user feedback
- Password secured SMS commands
- Multiple watchdog levels for maximum stability
- Event based free configurable module to fit any job
- Remote configurable to fit any job (both firmware and configuration files can be updated/patched over-the-air)
- Supports integration into third party networks

Connectivity

- Excellent national telecom coverage
- Nano SIM slot

Positioning

- BLE transceiver
- Up to 60 metres range in line of sight

Electrical

- +5 VDC input voltage
- Rechargeable internal battery
- 24-hour battery life

Connectors

- SMA-F antenna connector
- USB-C charging port +5 VDC
- USB-C to USB charging cable
- Antenna extension cable
- Stubby antenna

StreamLine

Product summary

The 4666B StreamLine Scanner BLE is designed for seamless signal detection and strength analysis of StreamLine BLE modules via their unique signal. This Scanner can spot devices from 400 meters away within direct line of sight, and even farther with an external antenna.

The device can be set up with password-protected SMS instructions, directing it to focus on a specific device. Or, it can swiftly display the identifier of any StreamLine BLE module it encounters, provided it's encrypted the same way.

No need to fret about power. With its rechargeable battery via a convenient +5 VDC USB-C port, this module boasts up to 24 hours of runtime on a single charge during typical use.

The module can be customised to specification when ordering in large volumes. Ask your StreamLine products supplier for more details.

Connectivity specifications

- LTE-M modem
 - Quectel BG95-M3 LTE Cat M1/GSM module, all global certifications, and R&TTE directives
 - Frequency bands: GSM/GPRS: 850/900/1800/1900 MHz
 - LTE: B1 ... 5, 8, 12, 13, 18, 19, 20, 25, 28
 - GNSS navigation (GPS + (Glonass or Galileo))
-

Position

- BLE (RF 2,4 GHz)
 - Nordic nRF52832
 - Protocol: BLE 5.3 and custom 2,4 GHz protocol
 - Transmitting power: up to +4 dBm
 - Sensitivity: -96 dBm (BLE)
-

Operating temperature

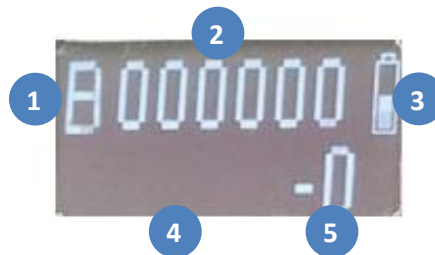
- Rechargeable LiPo cell
 - Discharging: -20°C ... +60°C
 - Charging: 0°C ... +45°C
-

Electrical

- Rated voltage
 - USB-C charging port: +5 VDC
 - Charging current
 - Max 450 mA
-

StreamLine

Display



The display shows 5 types of information:

1. Type of Signal B=BLE. When the letter blinks, a new signal has been received
If the letter does not blink no new signals have been received
2. Last 6 digits from the DevEUI
A DevEUI of 000000 means the system listens to all StreamLine BLE signals using the same encryption
The 000000 will be replaced with the last 6 digits of the DevEUI belonging to the received signal
3. Battery indicator
During charging of the battery, the indicator shows the charging level. When the indicator shows a full charge
On a full battery charge, the StreamLine Scanner will operate up to 24 hours
4. Signal strength bar, showing strength of the received BLE signal
5. Numeric signal strength

Antenna connector

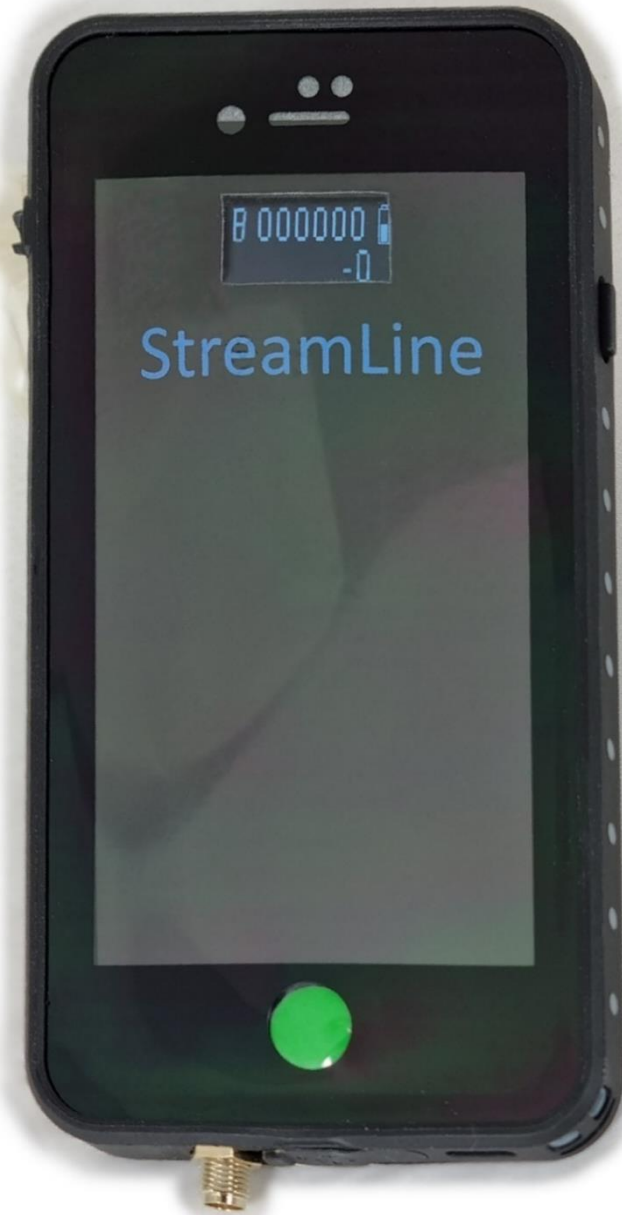


The module comes equipped with an SMA female connector.

NOTE this is not a Reverse Polarity connector (RP), so RP-SMA male connectors will not fit.

StreamLine

Indication of scale



Size: 150 x 75 x 18 mm

StreamLine

About StreamLine IoT BV

StreamLine IoT BV is part of a group of companies active in the industry of track & trace modules, IoT solutions and internet portal services since 1995.

Disclaimer

StreamLine IoT BV reserves the right to make changes without further notice to any products herein to improve reliability, function or design. StreamLine does not assume any liability arising out of the application or use of any product or circuit described herein; neither does it convey any license under its patent rights, nor the rights of others.



©2024 StreamLine IoT BV
The Netherlands
www.streamline-iot.com
Version 2.2



Click [here](#) to view this product on our site.